



**Report of XRD analysis of clinoptilolite in the sample of Clinoptilolite of sedimentary origin – batch M231214-1**

**Client:** Ing. Marta Mihočová, ZEOCEM, a.s. Bystré, Slovakia.

**Requirement:** quantitative analysis of clinoptilolite in the sample of **Clinoptilolite of sedimentary origin – batch M231214-1** from ZEOCEM, a.s. Bystré, Slovakia.

**Methodology:** XRD analysis was performed at XRD diffractometer PANalytical X'Pert Pro with Cu anode in the range 7 – 31 °2 Theta. External standard method was used for the quantitative analysis. The standard with the 84% content of clinoptilolite, guaranteed by the Institut für Geowissenschaften, Montanuniversität Leoben, was provided by the client. The standard sample as well as the analysed sample were measured for three times. The content of Clinoptilolite in the analysed sample was calculated by averaging integral intensity values of the six selected diffraction lines.

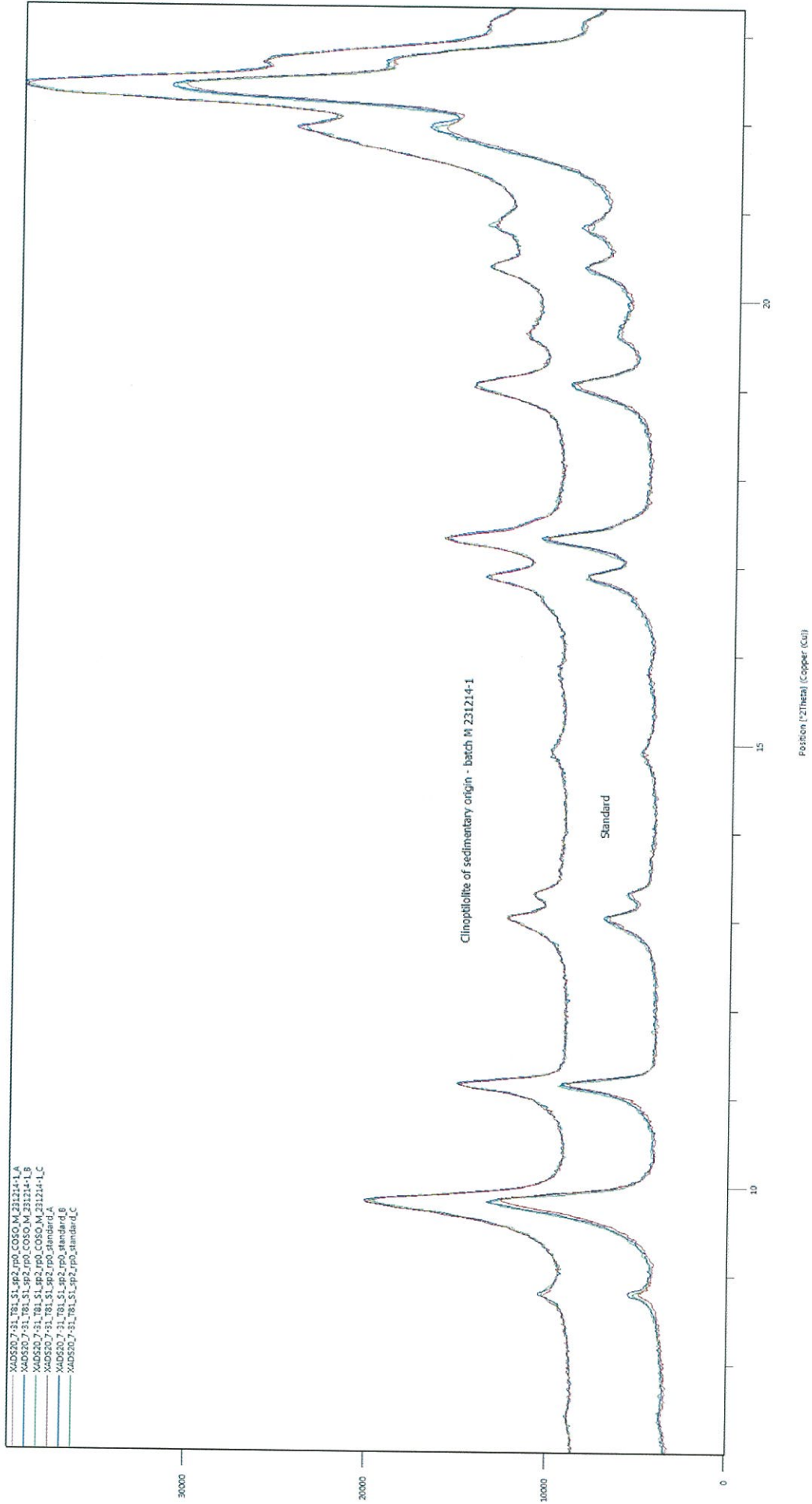
**The estimated concentration of clinoptilolite in the sample of Clinoptilolite of sedimentary origin – batch M231214-1 was 92%.**

Prague, 27<sup>th</sup> February 2015

Ing. Jana Cibulková, Ing. Martina Kohoutková Ph.D.  
Laboratory of XRD Diffractometry,  
Central Laboratories, ICT Prague  
Technická 5, 166 28 – Praha 6

VYSOKÁ ŠKOLA  
CHEMICKO-TECHNOLOGICKÁ  
Centrální laboratoře  
Laboratoř rentgenové diffraktometrie  
166 28 Praha 6, Technická 5  
Tel: 24254001, IČO: 60481978

Counts



VYSOKÁ ŠKOLA  
**CHEMICKO-TECHNOLOGICKÁ**  
Centrální laboratoře  
Laboratoř rentgenové difrakce  
166 28 Praha 6, Technická 5  
Tel.: 24354201, IČO: 60461979